

FCUBS Application Deployment in Weblogic
Oracle FLEXCUBE Universal Banking
Release 14.3.0.0.0
[May] [2019]



Table of Contents

- 1. FLEXCUBE UNIVERSAL BANKING SOLUTIONS..... 1-1
 - 1.1 FCUBS APPLICATION FULL DEPLOYMENT 1-1
 - 1.2 FCUBS APPLICATION PARTIAL DEPLOYMENT..... 1-10

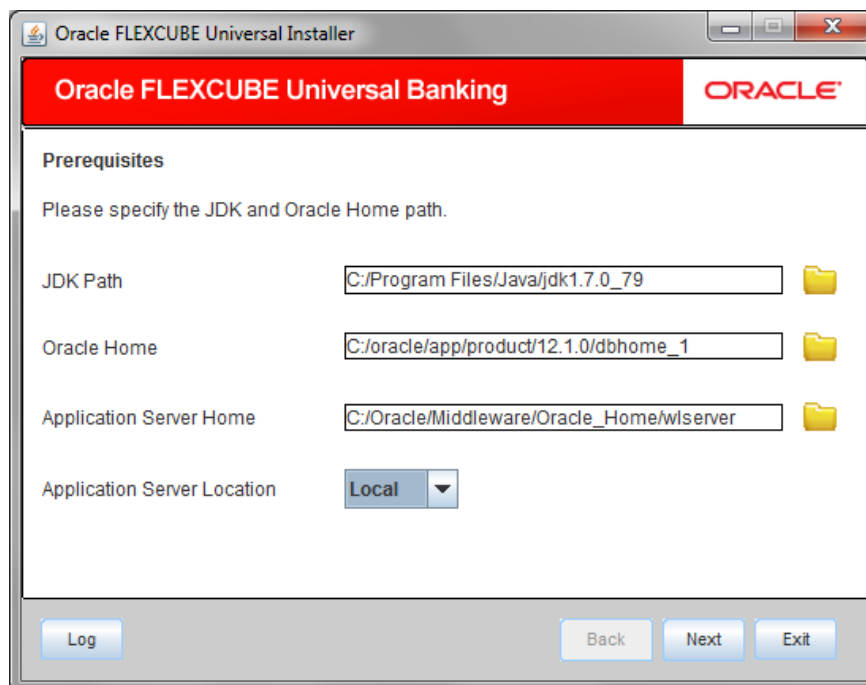
1. FLEXCUBE Universal Banking Solutions

This document describes step to install FCUBS application into weblogic server in full and partial deployment modes.

Please refer “FCUBS Manual Deployment WL” to install jersey-bundle before deployment of FCUBS application.

1.1 FCUBS Application Full Deployment

1. Launch Oracle FLEXCUBE Universal Banking Solution Installer.



Enter the following details

JDK Path:

Provide Home folder path of JDK1.7

Oracle Home

Provide home folder path of Oracle Client or Database

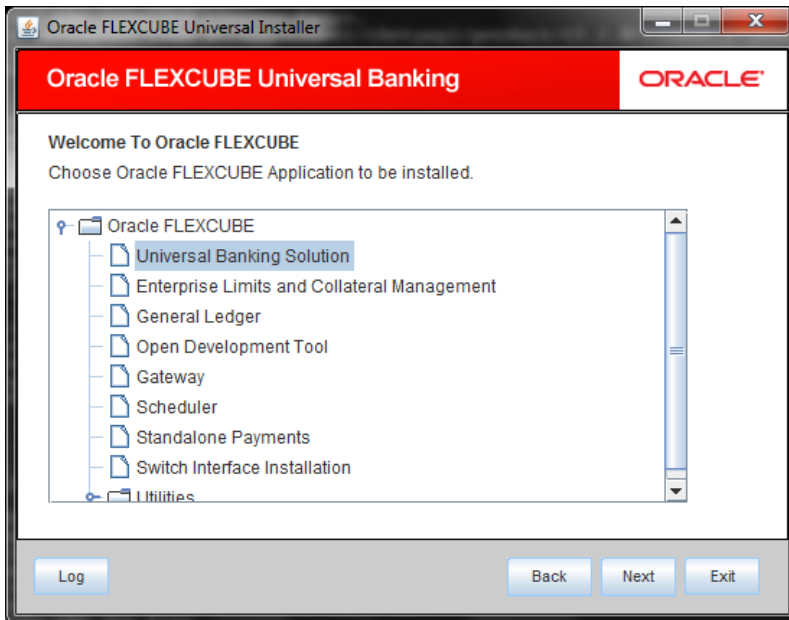
Application Server Home

Provide home folder path of Application Server

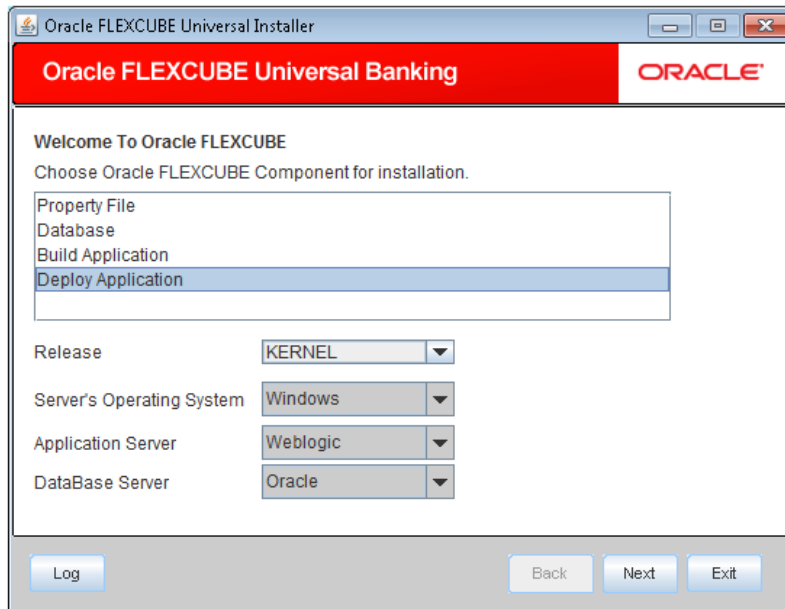
Application Server Location

Select location of the application server either local or remote

2. Click on 'Next' and the following screen is displayed:



3. Select 'Universal Banking Solution'.
4. Click 'Next' and the following screen is displayed:



5. Select 'Deploy Application'.
6. Specify the following details:

Release

Select the release in which you are installing the FCUBS application. Select the appropriate one from the adjoining drop-down list.

Server's Operating System

Select the server's operating system in which you are installing the FCUBS application. Select the appropriate one from the adjoining drop-down list.

Application Server

Select 'Weblogic' from the adjoining drop down list.

Database Server

Select the database server in which you are installing the FCUBS application. Select the appropriate one from the adjoining drop-down list.

7. Once you have specified all the details, click 'Next' and the following screen is displayed:

Name	Value
Admin IP	10.10.10.10
Admin Port	1111
Admin Username	<user_name>
Server Admin Password	*****

8. Specify the following details:

Admin IP

By default it will display local host and user cannot edit it.

Admin Port

Specify the port number of weblogic server.

Admin UserName

Specify the appropriate admin username of the weblogic application server.

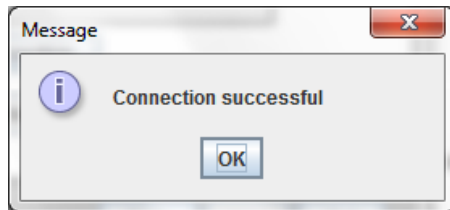
Admin Password

Specify the appropriate admin password of the weblogic application server.

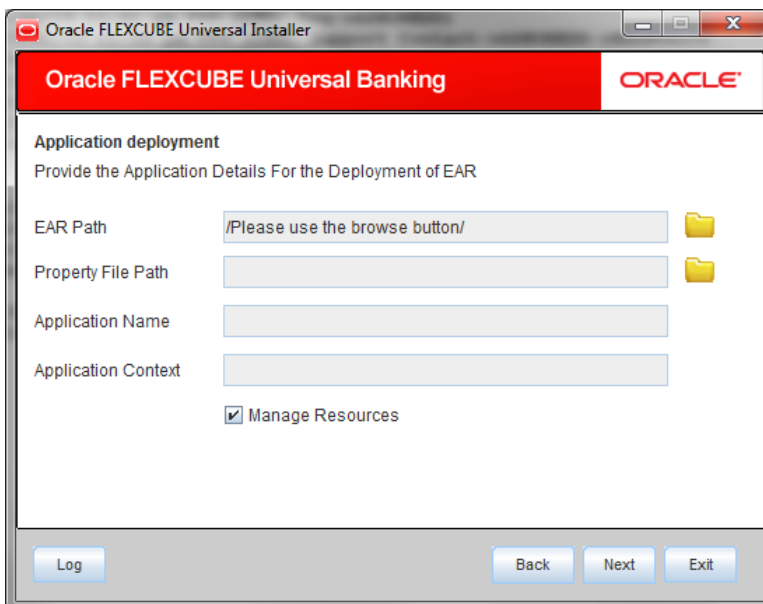
Type of Deployment

Select 'Full Deployment'.

9. Click 'Test Connection' to test the connection with the application server. On successful connection, the following screen is displayed:




10. Click 'OK' and the following screen is displayed:



11. Specify the following details:

EAR Path

Specify the location. You can use the directory button to browse and select the directory.

 The Application EAR path cannot be copied and pasted on to the text box, thereby demanding the use of the browse button to select the EAR.

Property File Path

If the property file is internal to the application EAR, it gets displayed here on selection of EAR path. If the property file is external, specify the location. You can use the directory browser and select the directory.

Application Name

Application name gets displayed on selection of EAR path.

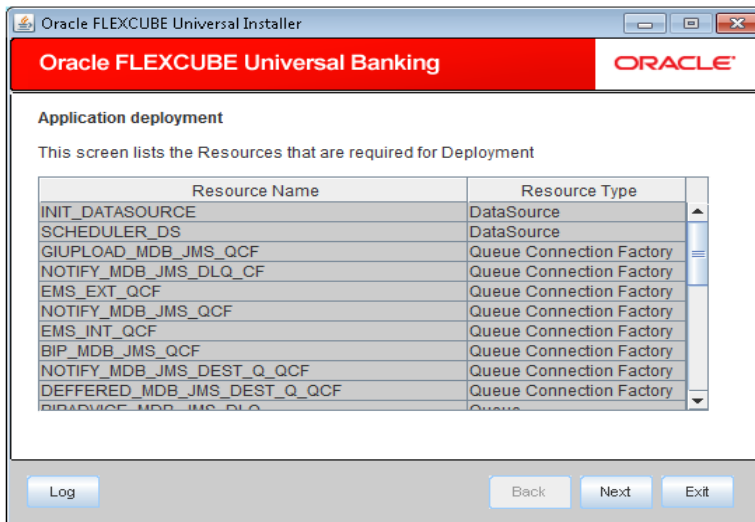
Application Context

Application context gets displayed on selection of EAR path.

Manage Resources

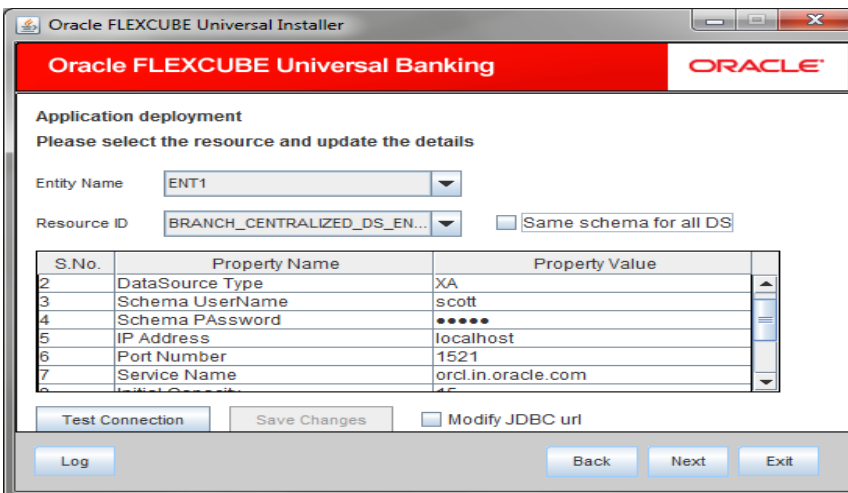
Check this box if resources are to be created along with deployment.

12. Click 'Next' and the following screen is displayed:



The current screen shows a list and type of resources that are created.

13. Click 'Next' and the following screen is displayed:



Specify the following details:

Entity Name

Select the entity name from the drop down. For each entity in entity name enter below details and save changes (unless 'same schema for all DS' checked). This is visible only for Multi Entities.

Resource ID

Select the data source needs to get created from the adjoining drop down list. Enter below details for each resource id, click "test connection" then click "save changes"

Same schema for all DS

If this checkbox is checked, then same schema details will be applied to all entities. This is applicable only for Multi Entities.

DataSource Driver

specified the jdbc driver url with which the connection is established.
Ex: oracle.jdbc.OracleDriver for Non-XA datasources

DataSource Type

Specifies the type of datasource that is to be created. The resource INIT_DATASOURCE must be NXA type and others must be XA.

Schema Username

specified the username of the schema to which the connection is established.

Schema Paasword

specifies the password of the schema.

IP Address

specifies to provide the host address of the scema.

Port Number

provide the port number of schema.

Service Name

provide the schema name.

Initial Capacity

The number of physical connections to create when creating the connection pool in the data source

Maximum Capacity

The maximum number of physical connections that this connection pool can contain.

Capacity Increment

The increment by which this JDBC connection pool's capacity is expanded.

Shrink Frequency

The number of seconds to wait before shrinking a connection pool that has incrementally increased to meet demand.

Connection Reserve Timeout

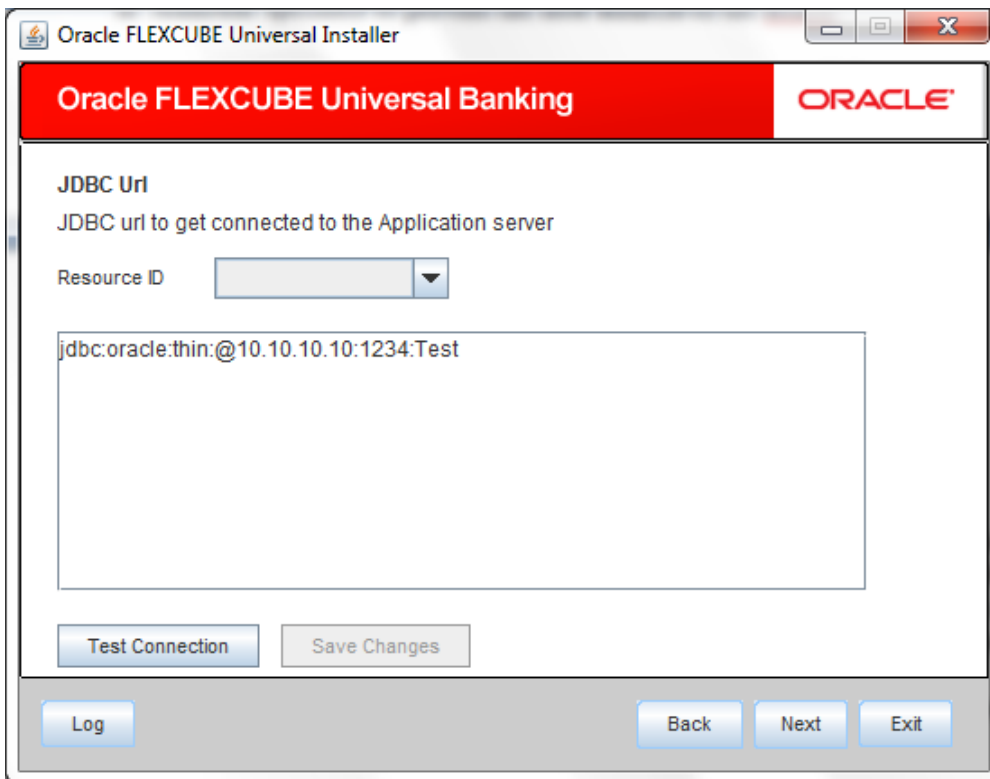
The number of seconds after which a call to reserve a connection from the connection pool will timeout.

- Click 'Save Changes' to save the values provided in the table against corresponding value of resource ID.
- Click 'Test Connection' to establish connection with required details provided in the table.

Modify JDBC Uri

Check this box to modify the JDBC URL.

- Click 'Next' and following screen is displayed:




The screenshot shows the Oracle FLEXCUBE Universal Installer window. The title bar reads "Oracle FLEXCUBE Universal Installer". The main window has a red header with "Oracle FLEXCUBE Universal Banking" and the ORACLE logo. Below the header, the section is titled "JDBC Uri" with the instruction "JDBC url to get connected to the Application server". There is a "Resource ID" dropdown menu. A text area contains the JDBC URL: "jdbc:oracle:thin:@10.10.10.10:1234:Test". At the bottom, there are buttons for "Test Connection", "Save Changes", "Log", "Back", "Next", and "Exit".

- Specify the following details:

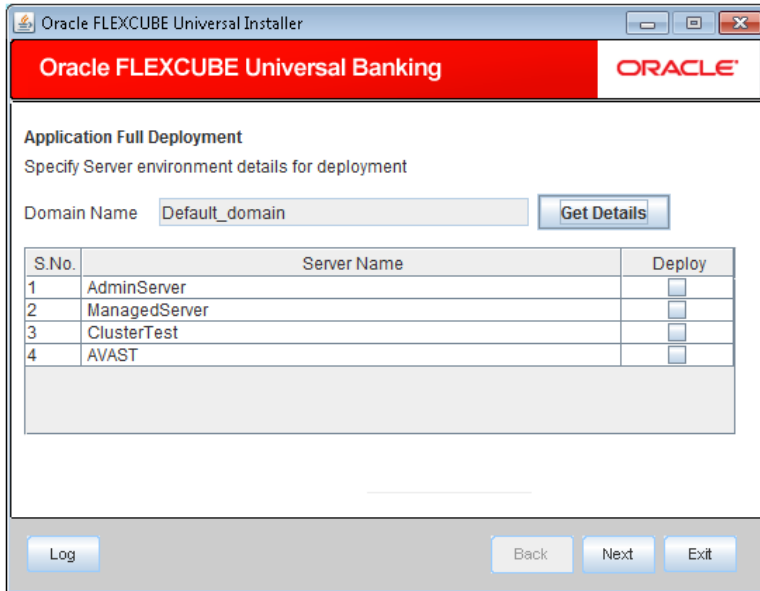
Resource ID

It provides the list of all the datasources created. Select the data source for which the JDBC url needs to be modified from the adjoining drop down list.

 The URL generated from the previous screen will be displayed here. If the user wants to change the URL. It can be changed in the present screen.

- Click 'Test Connection' to check the connection using the changed url, If the url changed is correct the connection will be success.

19. Click on 'Save Changes' for saving the changed JDBC url
20. Click 'Next' and the following screen is displayed.



21. Specify the following details:

System displays the weblogic domains name.

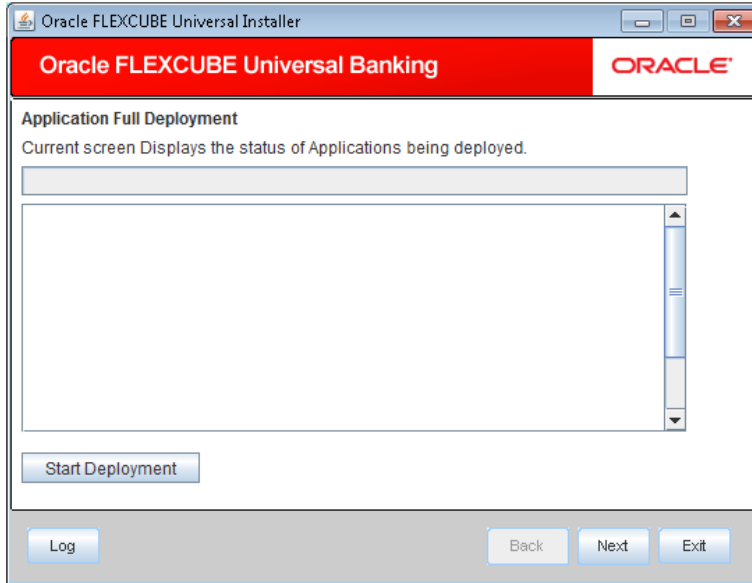
22. Click 'Get Details' and the list of available servers are displayed:.

23. Check the box against one of the server's name.



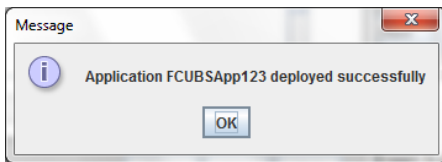
Atleast one server should be selected to proceed to next screen.

Click 'Next' and the following screen is displayed:

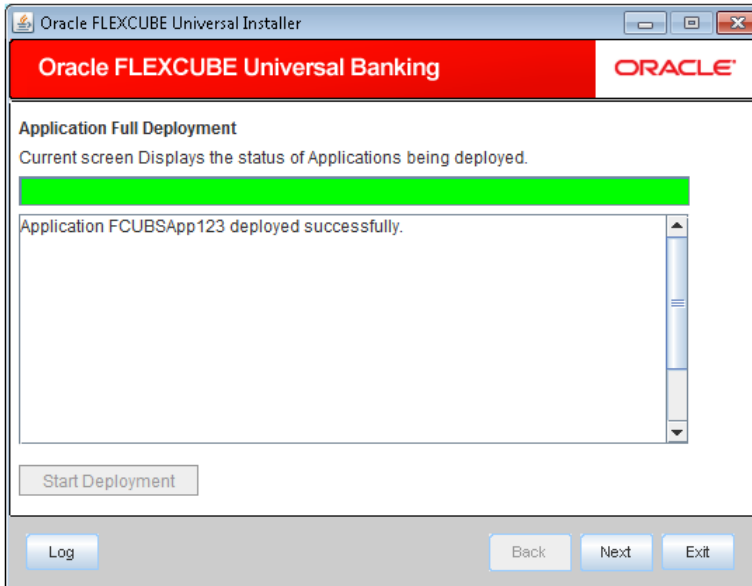


24. Click 'Start Deployment' to begin the process of application deployment.

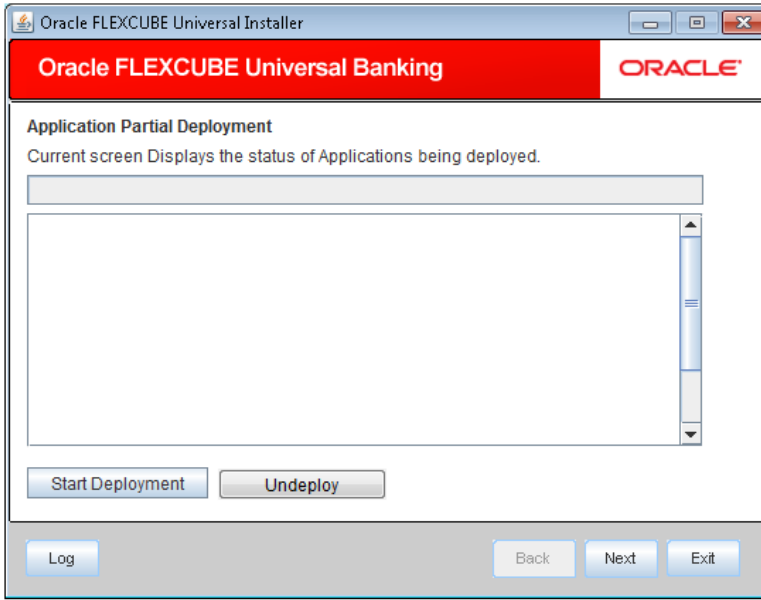
On successful deployment, the following screen is displayed:



25. Click 'OK' and the following screen is displayed:



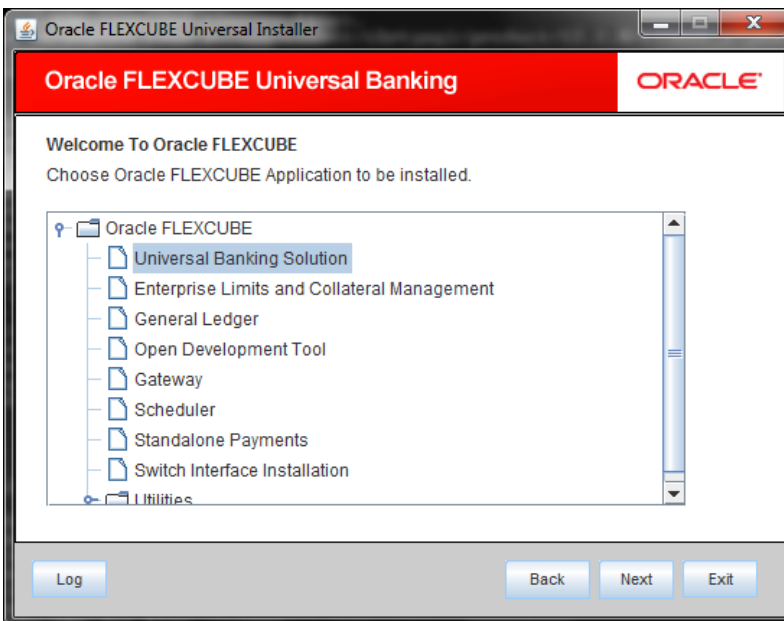
If the deployment is not successful, the 'Undeploy' button gets enabled.



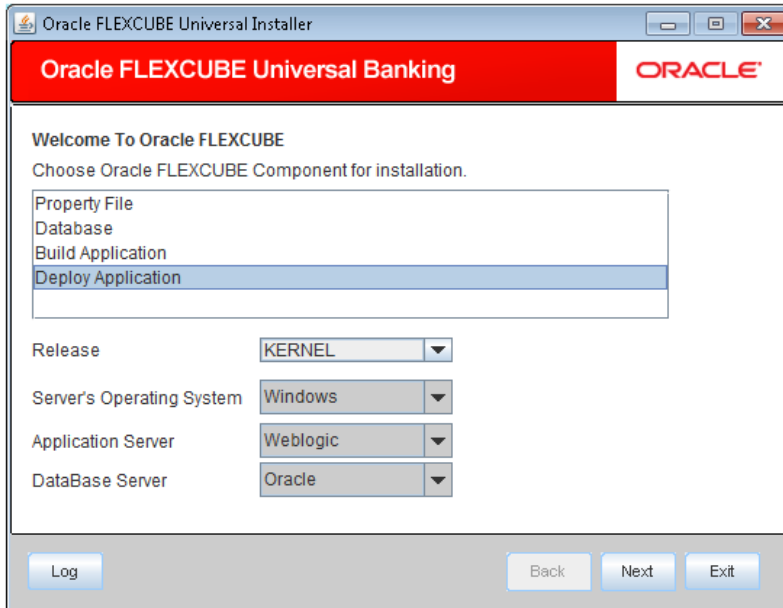
Click 'Undeploy' for undeploying the partially deployed EAR from the server.

1.2 FCUBS Application Partial Deployment

1. Launch Oracle FLEXCUBE Universal Banking Solution Installer.
2. Click 'Next' and the following screen is displayed:



3. Select 'Universal Banking Solution'.
4. Click 'Next' and the following screen is displayed:



5. Specify the following details:
6. Select 'Deploy Application'.
7. Specify the following details:

Release

Select the release in which you are installing the FCUBS application. Select the appropriate one from the adjoining drop-down list.

Server's Operating System

Select the server's operating system in which you are installing the FCUBS application. Select the appropriate one from the adjoining drop-down list.

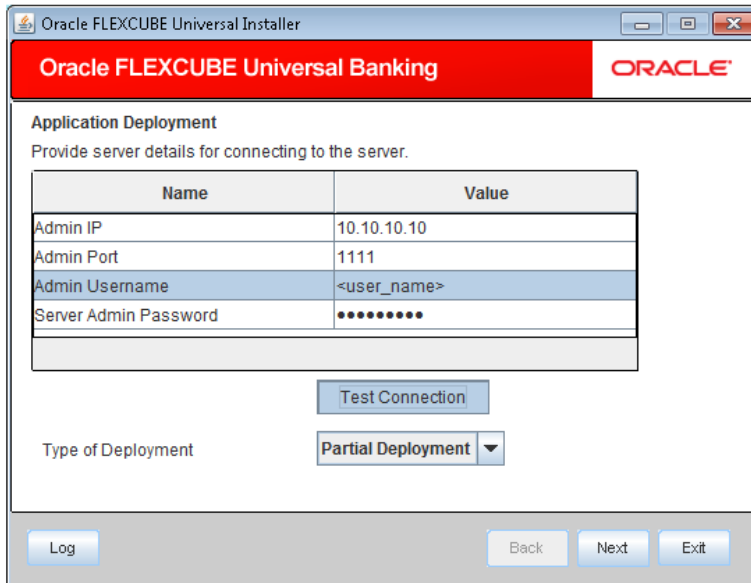
Application Server

Select 'Weblogic' from the adjoining drop down list.

Database Server

Select the database server in which you are installing the FCUBS application. Select the appropriate one from the adjoining drop-down list.

8. Click 'Next' and the following screen is displayed:.



Specify the appropriate admin username of the weblogic application server.

Admin IP

By default it will display local host and user cannot edit it.

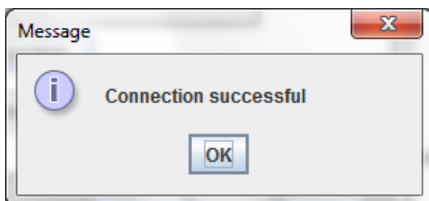
Admin Password

Specify the appropriate admin password of the weblogic application server.

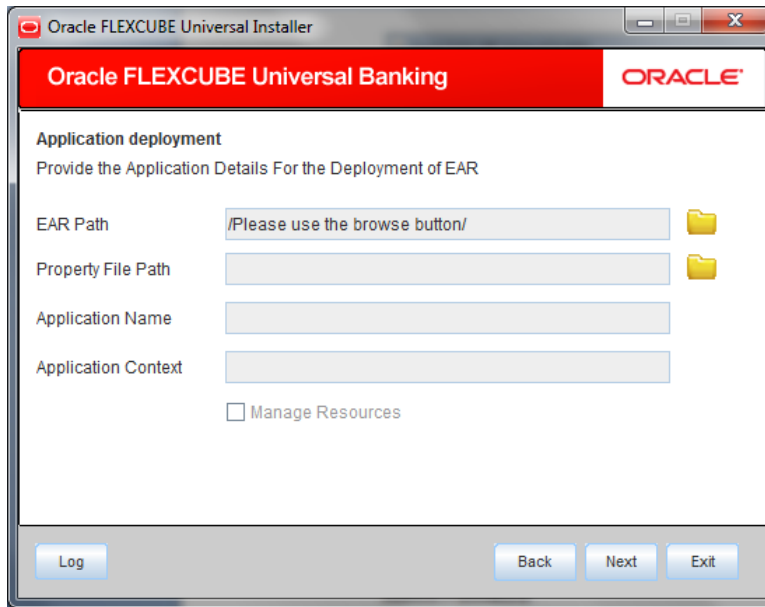
Type of Deployment

Select 'Partial Deployment'.

9. Click 'Test Connection' to test the connection with the application server. On successful connection, the following screen is displayed:



10. Click 'OK' and the following screen is displayed:



11. Specify the following details:

EAR PATH

Specify the path of the ear which is to be deployed.

Property File Path

If the property file is internal to the application EAR, it gets displayed here on selection of EAR path. If the property file is external, specify the location. You can use the directory button to browser and select the directory.

Application Name

Application name gets displayed on selection of EAR path.

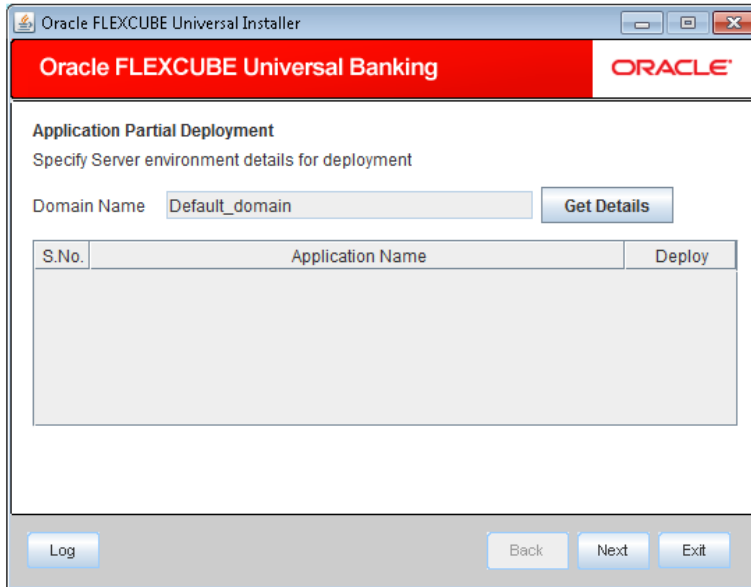
Application Context

Application context gets displayed on selection of EAR path.

Manage Resources

This checkbox is disabled as manage resource is not supported in partial deployment.

12. Click on 'Next' and the following screen is displayed:



13. System displays the weblogic domain name.

14. Click 'Get Details' to list all the applications deployed on weblogic application server.

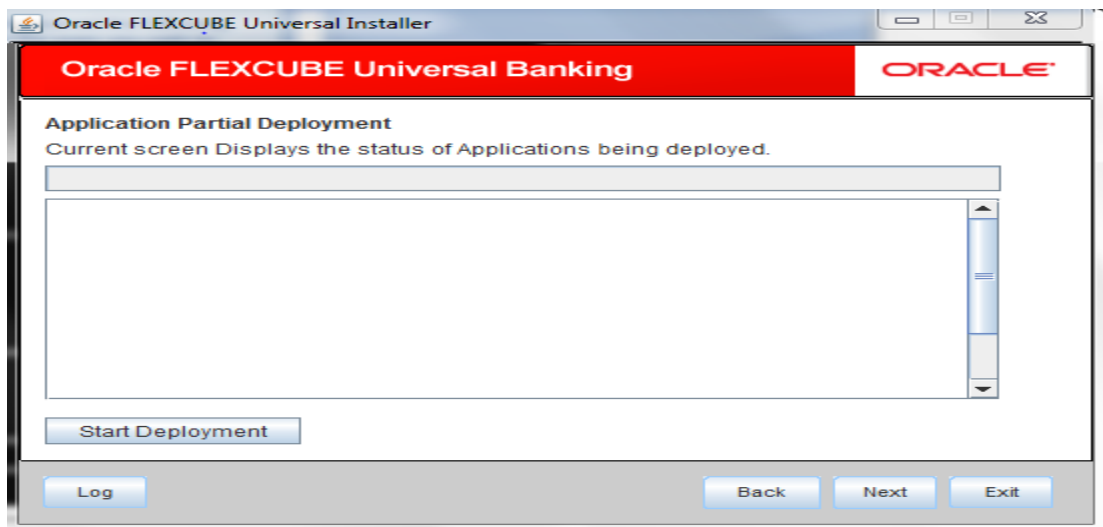
Application Name

15. Specify the application to be patched.



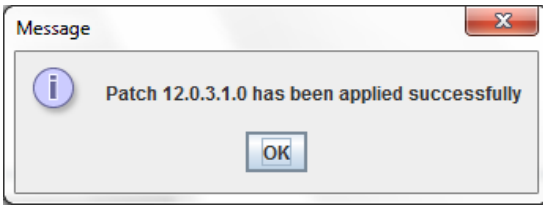
If no application is available then partial deployment cannot be proceeded further.

16. Click 'Next' and the following screen is displayed:

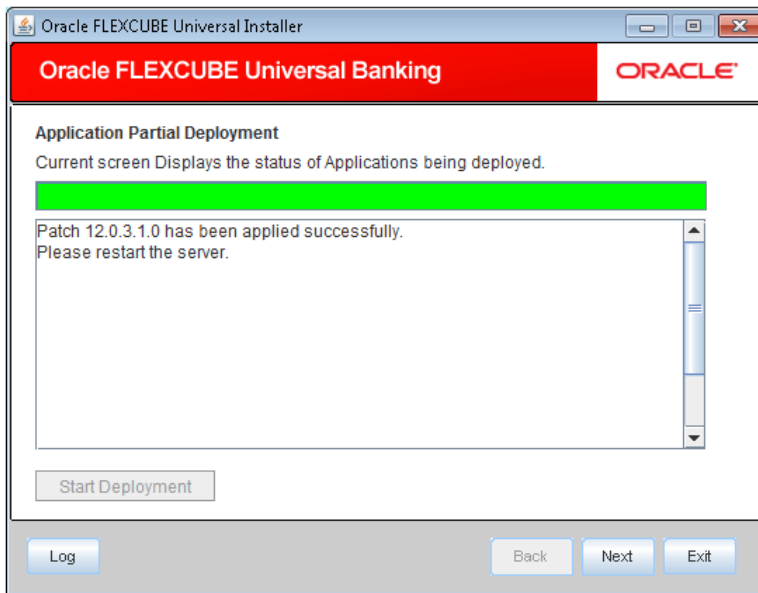


17. Click 'Start Deployment' to start the partial/patch deployment.

18. On successful partial deployment the following screen is displayed:



19. Click 'OK' and the following screen is displayed:



20. Restart the server for changes pertaining to the deployed patch to reflect.



FCUBS Application Deployment in Weblogic
[May] [2019]
Version 14.3.0.0.0

Oracle Financial Services Software Limited
Oracle Park
Off Western Express Highway
Goregaon (East)
Mumbai, Maharashtra 400 063
India

Worldwide Inquiries:
Phone: +91 22 6718 3000
Fax: +91 22 6718 3001
<https://www.oracle.com/industries/financial-services/index.html>

Copyright ©[2007], [2019], Oracle and/or its affiliates. All rights reserved.

Oracle and Java are registered trademarks of Oracle and/or its affiliates. Other names may be trademarks of their respective owners.

U.S. GOVERNMENT END USERS: Oracle programs, including any operating system, integrated software, any programs installed on the hardware, and/or documentation, delivered to U.S. Government end users are "commercial computer software" pursuant to the applicable Federal Acquisition Regulation and agency-specific supplemental regulations. As such, use, duplication, disclosure, modification, and adaptation of the programs, including any operating system, integrated software, any programs installed on the hardware, and/or documentation, shall be subject to license terms and license restrictions applicable to the programs. No other rights are granted to the U.S. Government.

This software or hardware is developed for general use in a variety of information management applications. It is not developed or intended for use in any inherently dangerous applications, including applications that may create a risk of personal injury. If you use this software or hardware in dangerous applications, then you shall be responsible to take all appropriate failsafe, backup, redundancy, and other measures to ensure its safe use. Oracle Corporation and its affiliates disclaim any liability for any damages caused by use of this software or hardware in dangerous applications.

This software and related documentation are provided under a license agreement containing restrictions on use and disclosure and are protected by intellectual property laws. Except as expressly permitted in your license agreement or allowed by law, you may not use, copy, reproduce, translate, broadcast, modify, license, transmit, distribute, exhibit, perform, publish or display any part, in any form, or by any means. Reverse engineering, disassembly, or decompilation of this software, unless required by law for interoperability, is prohibited.

The information contained herein is subject to change without notice and is not warranted to be error-free. If you find any errors, please report them to us in writing.

This software or hardware and documentation may provide access to or information on content, products and services from third parties. Oracle Corporation and its affiliates are not responsible for and expressly disclaim all warranties of any kind with respect to third-party content, products, and services. Oracle Corporation and its affiliates will not be responsible for any loss, costs, or damages incurred due to your access to or use of third-party content, products, or services.